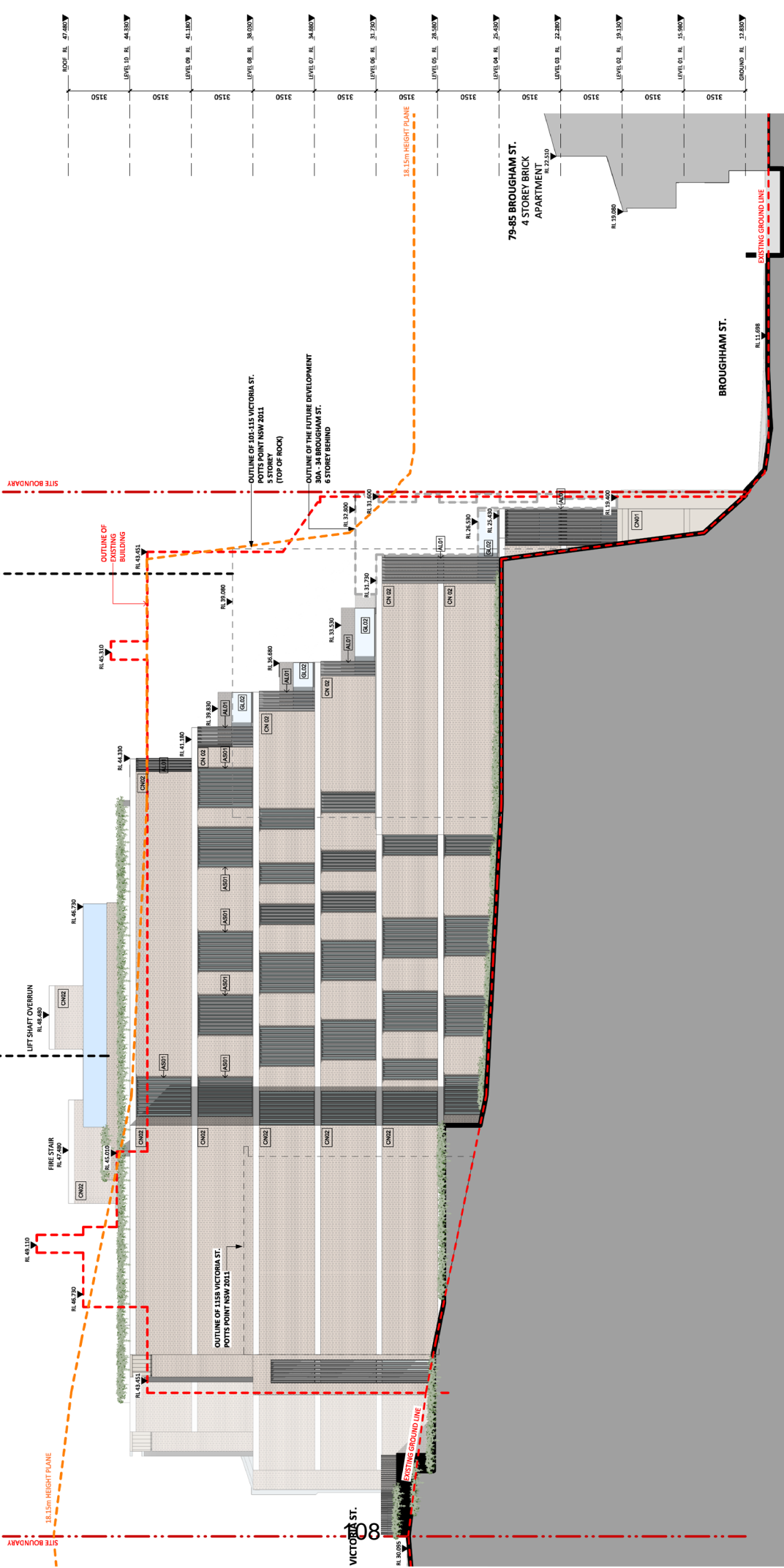


Attachment A4

Selected Drawings

LEGEND	
AB	SOLID BALUSTRADE
AL 01	ALUMINIUM BATTEN
AS 01	ALUMINIUM SCREEN
BR 01	LIGHT COLOUR BRICK
CN	CONCRETE
CN01	LIGHT COLOUR PAINT PRECAST CONCRETE
CN02	BRICK FEATURE PRECAST CONCRETE
GL 01	GLASS BALUSTRADE
GL 02	GLASS BALUSTRADE
MC 01	LIGHT COLOURED VERTICAL PROFILE CLADDING
MC 02	DARK COLOURED VERTICAL PROFILE CLADDING
PB 01	PEBBLES
RND 01	DARK COLOUR RENDER
ST 01	PAVING STONE



101-115 VICTORIA ST.
POTTS POINT NSW 2011
15 STOREY
(TOP OF ROCK)
BEHIND ELEVATION

117 VICTORIA ST.
POTTS POINT NSW 2011

OUTLINE OF 101-115 VICTORIA ST.
POTTS POINT NSW 2011
15 STOREY
(TOP OF ROCK)

OUTLINE OF THE FUTURE DEVELOPMENT
30A-34 BROUGHAM ST.
6 STOREY BEHIND

79-85 BROUGHAM ST.
4 STOREY BRICK
APARTMENT

BROUGHAM ST.

<p>NSW REGISTRATION BOARD REGISTERED ARCHITECTS 117 VICTORIA ST POTTS POINT NSW 2011</p>	<p>PROJECT 117 VICTORIA ST POTTS POINT NSW 2011</p>	<p>DATE 18/06/24</p>
<p>NSW REGISTRATION BOARD REGISTERED ARCHITECTS 117 VICTORIA ST POTTS POINT NSW 2011</p>	<p>DEVELOPMENT APPLICATION DA0201</p>	<p>SCALE 1:100 @ A1, 1:200 @ A3</p>
<p>ARCHITECT SITE 4 & 5, LEVEL 4 81 MARLBOROUGH ST POTTS POINT NSW 2011 TO 8994 8333 ARCHITECTS REGISTERED ARCHITECTS NSW ARCHITECTS 8801 NSW ARCHITECTS 8802 NSW ARCHITECTS 8803 KOICHI TAKADA ARCHITECTS KOICHI TAKADA.COM</p>	<p>CLIENT CEEROSE Parramatta Road, LEICHHARDT NSW 2040</p>	<p>NOTES THIS DOCUMENT IS NOT VALID FOR CONSTRUCTION UNLESS IT IS APPROVED BY THE LOCAL COUNCIL. THE LOCAL COUNCIL'S APPROVAL IS A CONDITION OF THE DEVELOPMENT APPLICATION. THIS DOCUMENT IS NOT VALID FOR CONSTRUCTION UNLESS IT IS APPROVED BY THE LOCAL COUNCIL. THE LOCAL COUNCIL'S APPROVAL IS A CONDITION OF THE DEVELOPMENT APPLICATION.</p>
<p>COORDINATOR ARCHITECT</p>	<p>DATE 18/06/24</p>	<p>REVISIONS</p>

